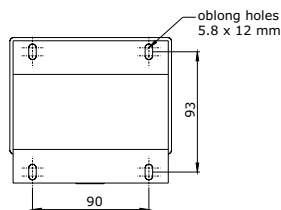
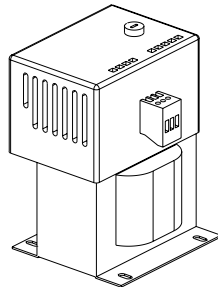


➔ **SV150/2.5 A**

**Single-phase power supply unit 150 V<sub>DC</sub> with brake chopper**

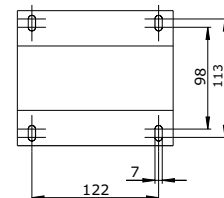
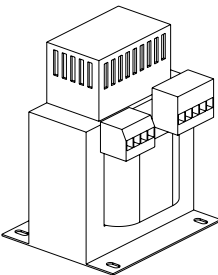
Primary	1 x 230/400 V <sub>AC</sub> 50/60 Hz
Secondary	1 x 150 V <sub>DC</sub> / 2.5 A, fusing 3.15A slow-acting
Dimensions	approx. 130 x 120 x 173 mm
Weight	approx. 5.6 kg
Protection class	IP00
Standard	VDE 0570, EN 61558, UL 1012 (transformer)



➔ **SV 60**

**Single-phase power supply unit 60 V<sub>DC</sub> with brake chopper**

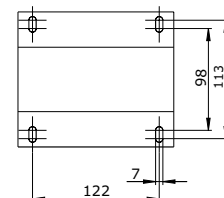
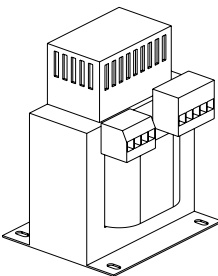
Primary	1 x 230/400 V <sub>AC</sub> 50/60 Hz
Secondary	1 x 60 V <sub>DC</sub> / 5 A, fusing 10 A slow-acting
Dimensions	approx. 120 x 120 x 170 mm
Weight	approx. 6.1 kg
Protection class	IP00
Standard	VDE 0570, EN 61558, UL 1012 (transformer)



➔ **SV 24/85/105**

**Single-phase power supply unit 24 V<sub>DC</sub> 85/105 V<sub>AC</sub>**

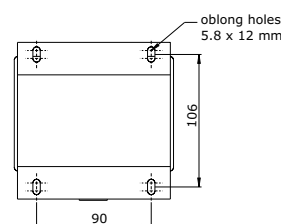
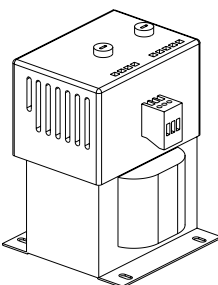
Primary	1 x 230/400 V <sub>AC</sub> 50/60 Hz
Secondary	1 x 24 V <sub>DC</sub> / 4 A, fusing 6.3 A slow-acting 1 x 85/105 V <sub>AC</sub> / 650 VA
Dimensions	approx. 150 x 130 x 190 mm
Weight	approx. 10.0 kg
Protection class	IP00 standard EN 61558-2-6



➔ **SV 24/63**

**Single-phase power supply unit 24V<sub>DC</sub>, 63V<sub>AC</sub>**

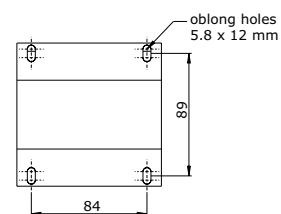
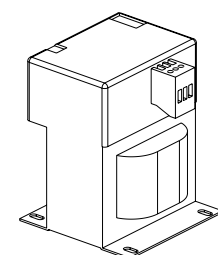
Primary	1 x 230/400 V <sub>AC</sub> 50/60 Hz
Secondary	1 x 24 V <sub>DC</sub> / 4 A, fusing 6.3 A slow-acting 1 x 63 V <sub>AC</sub> / 600 VA
Dimensions	approx. 150 x 130 x 190 mm
Weight	approx. 10.0 kg
Protection class	IP00 standard EN 61558-2-6



➔ **SV 24/60**

**Single-phase power supply unit 24 V<sub>DC</sub>, 60 V<sub>DC</sub>, brake chopper**

Primary	1 x 230/400 V <sub>AC</sub> 50/60 Hz
Secondary	1 x 24 V <sub>DC</sub> / 2 A, fusing 4 A slow-acting 1 x 60 V <sub>DC</sub> / 5 A, fusing 10 A slow-acting
Dimensions	approx. 120 x 130 x 175 mm
Weight	approx. 7.0 kg
Protection class	IP00
Standard	VDE 0570, EN 61558, UL 1012 (transformer)

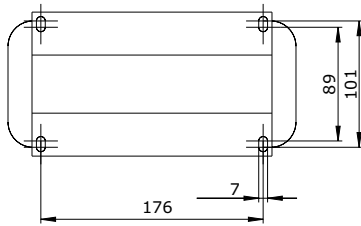
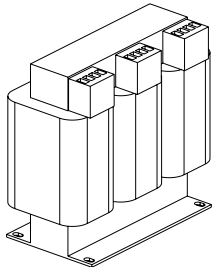


➔ **SV 24**

**Single-phase power supply unit 24 V<sub>DC</sub>**

Primary	1 x 230/ 400 V <sub>AC</sub> 50/60 Hz
Secondary	1 x 24 V <sub>DC</sub> / 5 A, fusing FKS 15 A
Dimensions	approx. 105 x 110 x 133 mm
Weight	approx. 4.4 kg
Protection class	IP00
Standard	VDE 0570, EN 61558, UL 1012 (transformer)

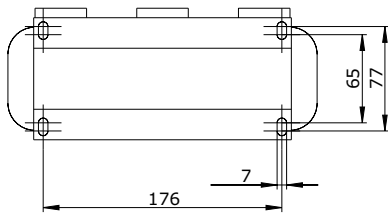
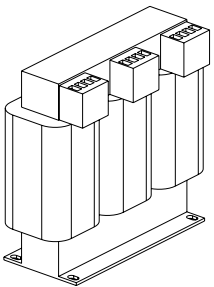




### → TD 1500-42/85/105

#### Three-phase transformer 42/85/105 V<sub>AC</sub> / 1500 VA

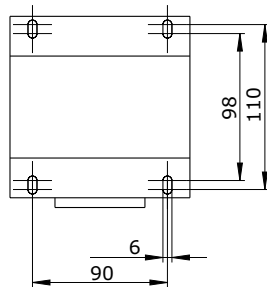
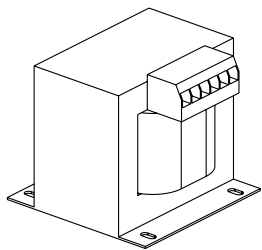
Primary	3 x 400 V <sub>AC</sub> 50/60 Hz
Secondary	3 x 42/85/105 V <sub>AC</sub>
Rated power	1500 VA
Connection type	YNyn0
Dimensions	approx. 228 x 120 x 200 mm
Weight	20 kg
Protection class	IP00
Standard	VDE 0570, EN 61558, UL 506, CSA 22.2



### → TD 1000-42/85/105

#### Three-phase transformer 42/85/105 V<sub>AC</sub> / 1000 VA

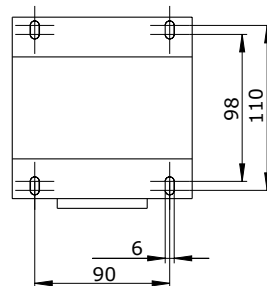
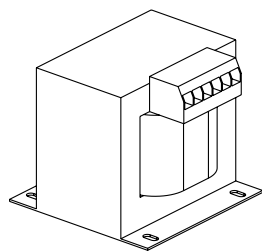
Primary	3 x 400 V <sub>AC</sub> 50/60 Hz
Secondary	3 x 42/85/105 V <sub>AC</sub>
Rated power	1000 VA
Connection type	YNyn0
Dimensions	approx. 228 x 95 x 200 mm
Weight	approx. 13.3 kg
Protection class	IP00
Standard	VDE 0570, EN 61558, UL 506, CSA 22.2



### → TE 500-85/105

#### Single-phase transformer 85/105 V<sub>AC</sub> / 500 VA

Primary	1 x 230/400 V <sub>AC</sub> 50/60 Hz
Secondary	1 x 85/105 V <sub>AC</sub>
Rated power	500 VA
Dimensions	approx. 120 x 122 x 105 mm
Weight	approx. 7.5 kg
Protection class	IP00
Standard	VDE 0570, EN 61558, UL 506, CSA 22.2



### → TE 500-42

#### Single-phase transformer 42 V<sub>AC</sub> / 500 VA

Primary	1 x 230/400 V <sub>AC</sub> 50/60 Hz
Secondary	1 x 42 V <sub>AC</sub>
Rated power	500 VA
Dimensions	approx. 120 x 122 x 111 mm
Weight	approx. 7.5 kg
Protection class	IP00
Standard	VDE 0570, EN 61558, UL 506, CSA 22.2